

CA

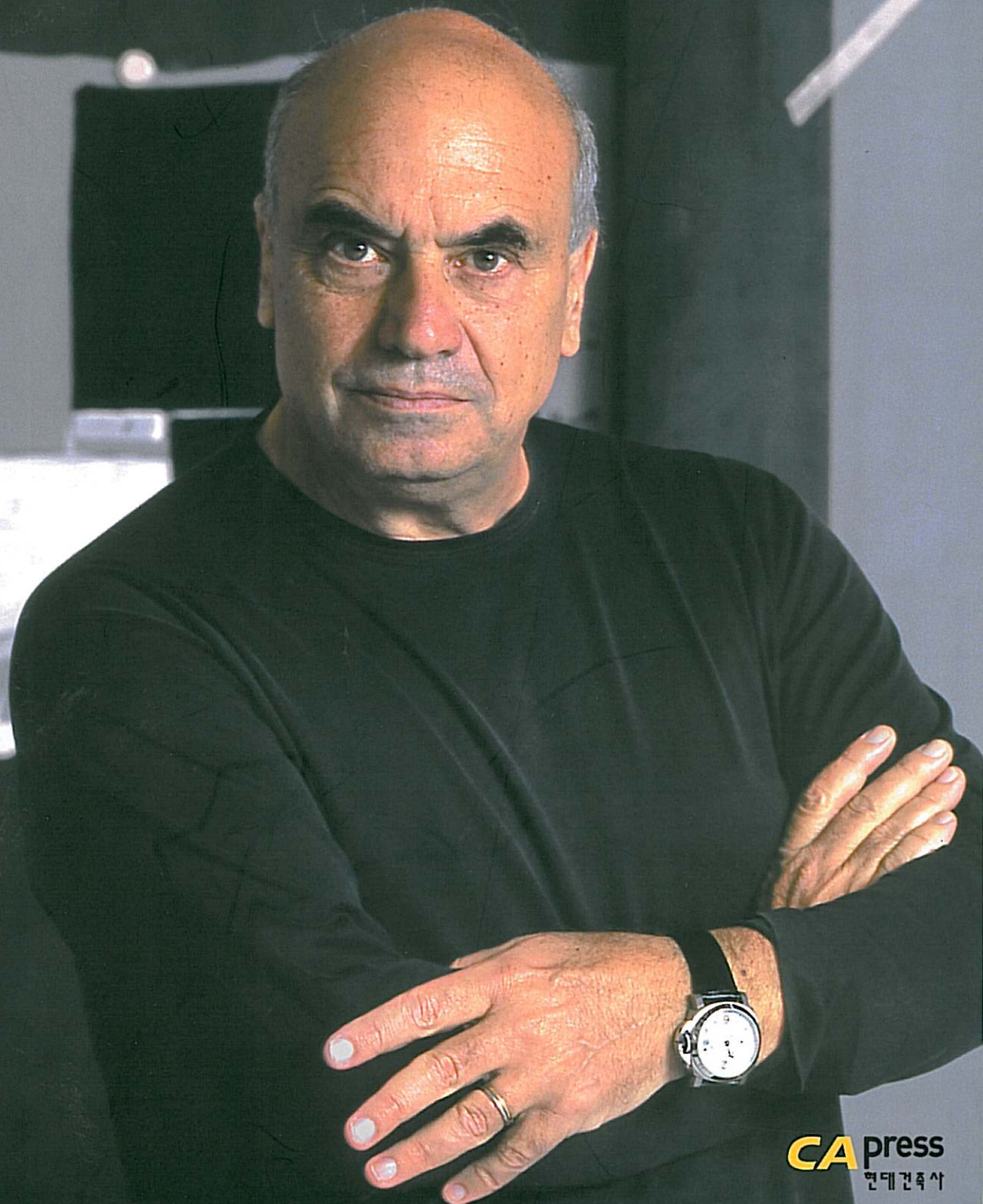
JUNE 2005 Vol.61 현대건축
Contemporary Architecture

M fuksas ARCH

Essay _ in the Boundary-Architecture & Urbanism

Works _ Ferrari Research Center, New Milan Trade Fair,
Grappa Nardini

Planning Projects _ San Giacomo Church and Community



9 771228 126001
ISSN 1228-1263

CApress
현대건축사

Grappa Nardini Research & Multimedia Center _ Vicenza, Italy

그라파 나르디니 연구 & 멀티미디어 센터 _ 비첸차, 이탈리아

A glass distillation bulb dedicated to the celebrated Nardini distillery. Two 'worlds': The first 'suspended', formed by 'two ellipsoidal' transparent bubbles that enclose the laboratories of the research center, and the other 'submerged', a space carved in the earth like a natural canyon that accommodates an auditorium and a foyer. The ramp descending to the auditorium is the original matrix of the 'canyon' space. It is utilizable as an open-air platform, creating one big auditorium space to host larger events. The audience is surrounded by a landscape generated by the arrhythmic configuration of the inclined walls.

A water bassin, at ground level, atopped with roof lights like outsized water drops. The vast reflective surface of the steel creates reflections and brilliant repetitions of the entrance area under the belly of the two floating bubbles. The lean columns with varying inclinations, together with the inclined volume of the lift, create a dynamic tension.

The visitor is faced with a succession of shifting images created by the attuned asymmetry in the combination of diverse architectural elements: The two juxtaposed ellipsoids, the inclined lift against the inclination of the staircase, the rotation of the entrance ramp.

The glass cladding of the two ellipsoids is a double skin partly transparent and partly translucent, that provides the viewer with a 360 view of the splendid landscape of Monte Grappa mountain.

나르디니 증류공장용 유리 증류구(球)

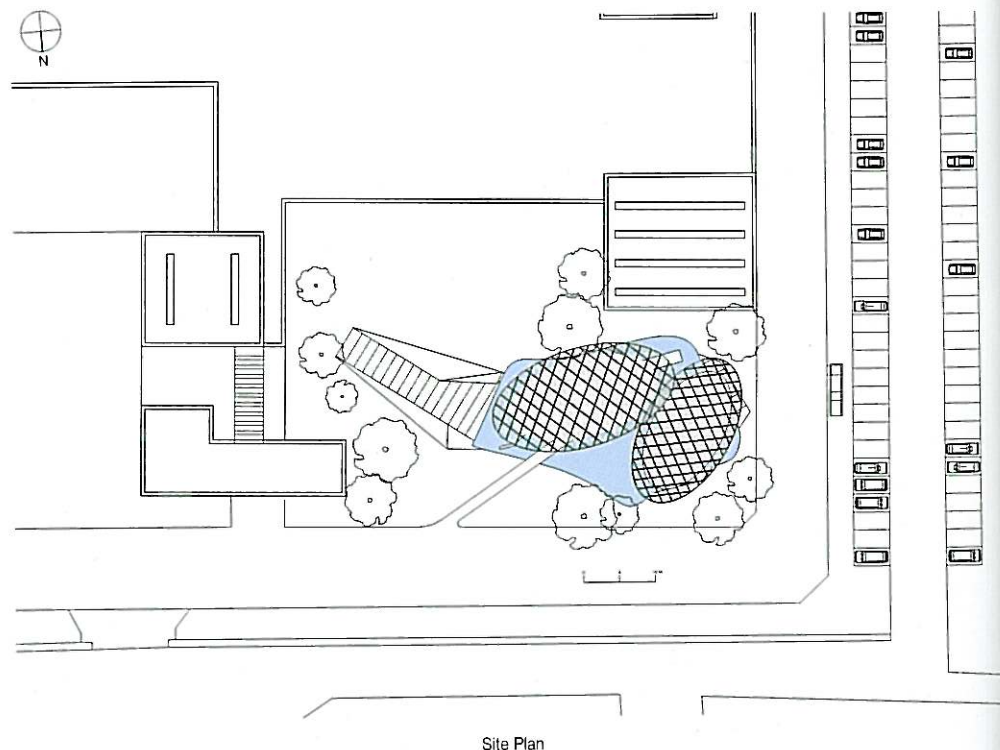
두 개의 세상. 첫 번째는 '공중에 떠있는' 상태이며 두 번째는 '잠겨있는' 상태이다. 투명한 타원형 공기방울 2개로 형성된 첫번째 공간은 연구센터의 실험실을 둘러싸고 있다. 그리고 천연 협곡처럼 대지 속에 파고들어가 있는 두 번째 공간에는 오디토리엄과 로비가 자리잡고 있다.

오디토리엄으로 내려가는 진입로는 '협곡' 공간을 이어주는 독특한 매개체 역할을 한다. 이 공간은 대형 행사를 개최할 수 있는 거대한 하나의 오디토리엄 공간을 조성하면서 야외 플랫폼으로서의 활용도를 높였다. 오디토리엄에 들어오는 관객들을 경사진 벽면들로 조성된 울동적인 환경이 감싸고 있다. 지상층에 있는 샘(Water Bassin)의 지붕은 거대한 물방울 같은 천정 조명으로 장식되어 있다.

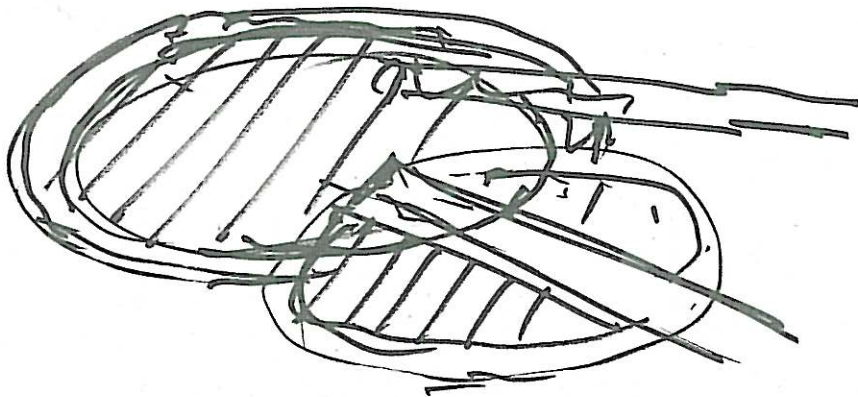
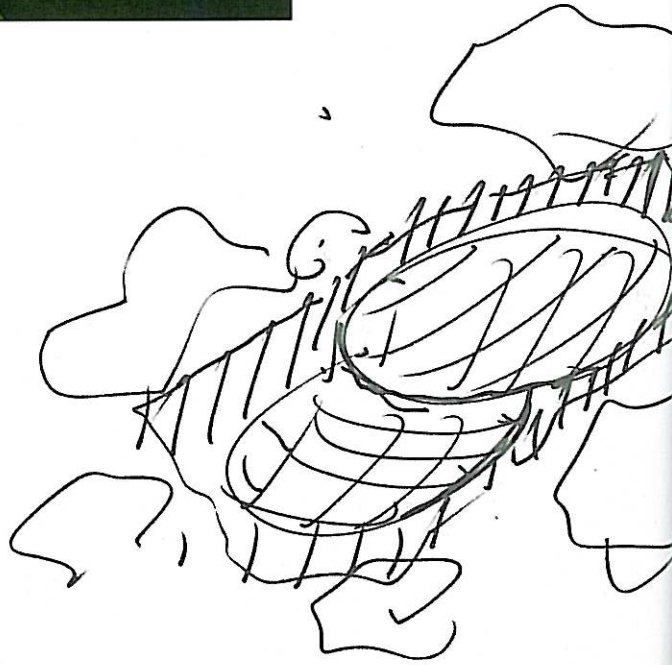
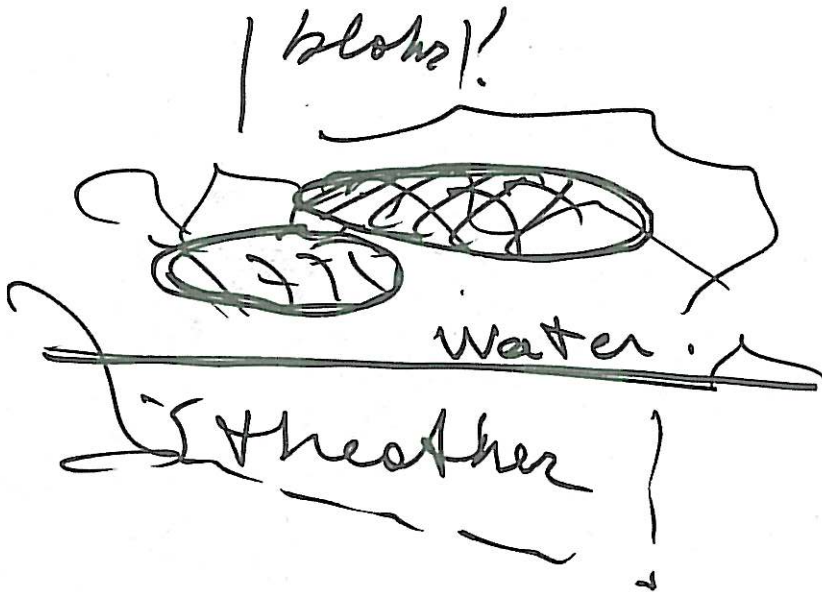
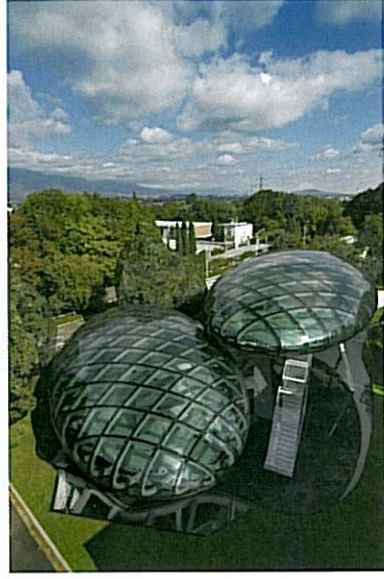
강렬 소재가 빛어내는 거대한 반사 표면은 떠 있는 공기방울 중앙의 불룩한 부분 아래 위치한 출입구에 반사광과 활기를 조성한다. 한편 다양한 각도로 경사진 기둥이 역시 기울어진 리프트의 볼륨감과 함께 어우러져 역동적인 긴장감을 조성한다. 이곳을 방문한 사람은 계속 변환하는 연속적인 이미지들과 마주하게 된다. 이 이미지는 다양한 건축 요소들의 조합 속에 조화로운 부조화/비대칭을 구성함으로써 만들어낸 것이다.

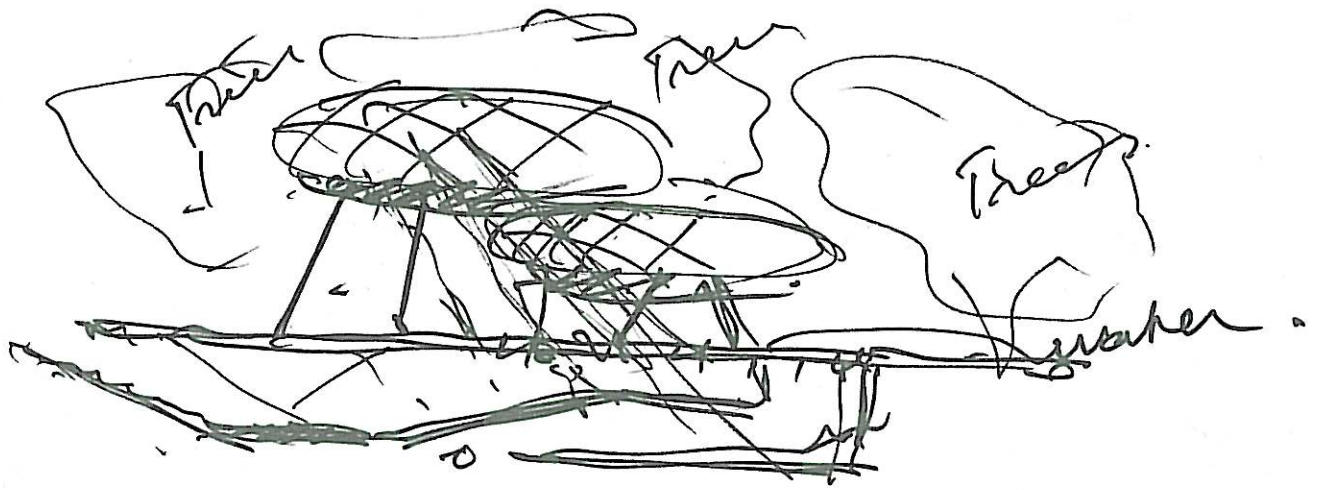
다시 말해, 나란히 서 있는 두개의 타원형, 경사진 계단에 기대어 있는 기울어진 리프트 현관 진입로의 로테이션등의 요소들이 함께 어우러져 이 같은 환경을 생성하고 있는 것이다. 두 개의 타원형의 유리 외벽은 부분적으로 투명하고 부분적으로 불투명한 이중 외피로 구성되어 있어 보는 이로 하여금 멋드러진 몬테그라파 산의 광경을 360°로 감상할 기회를 제공한다.

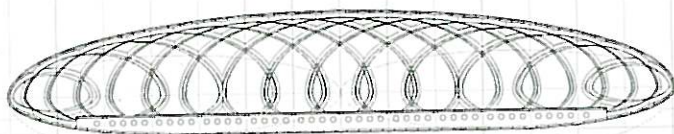
Location Bassano del Grappa, Vicenza, Italia
 Project Massimiliano Fuksas Architetto
 Interior Design Arch. Doriana O. Mandrelli
 Arch. Michal Shaffer (Assistant)
 Project Leader Arch. Davide Stolfi
 Engineering Consultant Ing. Gilberto Sarti
 Site Coordinator Arch. Jonny Sandon
 Srevice Consultant AI Studio - Torino
 Project Team Arch. Davide Stolfi
 Arch. Yain Wadham, Arch. Defne Dilber
 Model Makers Team Arch. Gianluca Brancaleone
 Arch. Andi Divizia, Arch. Andrea Fornello
 Gilles Burst
 Client Giuseppe e Cristina Nardini
 Construction Period 2002 - 2004
 Photography ©Maurizio Marcato



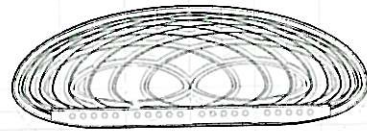




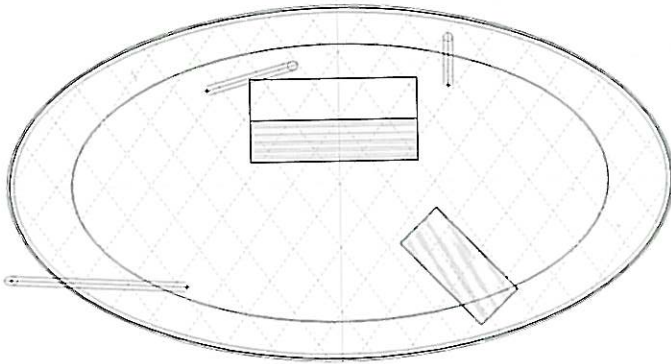




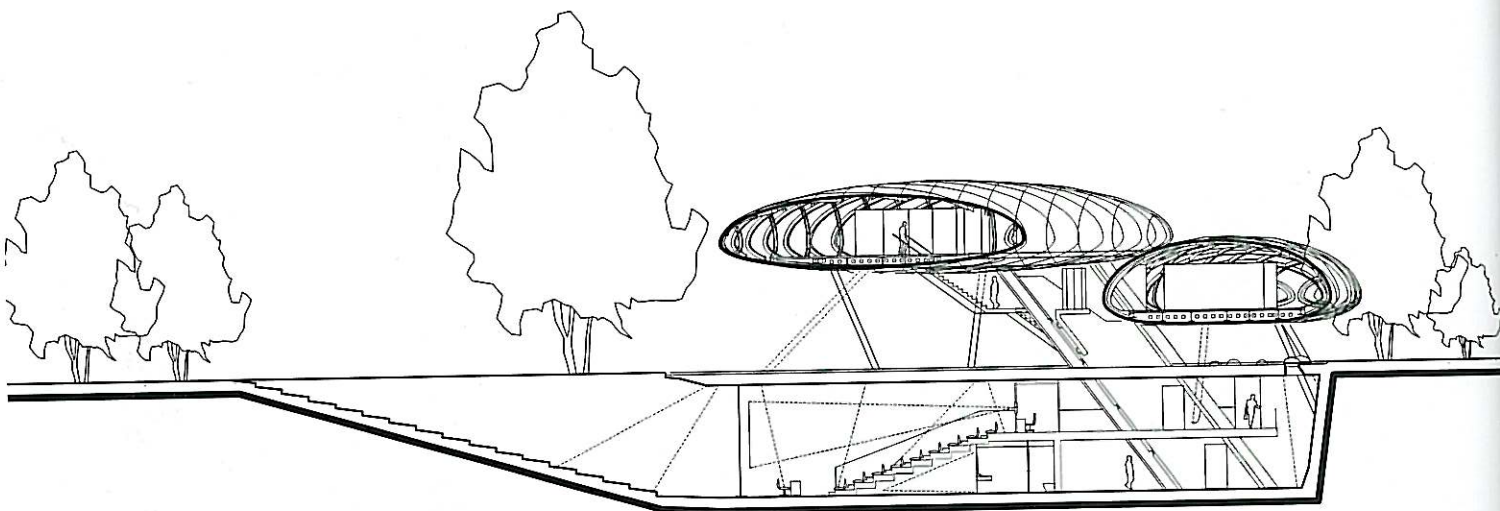
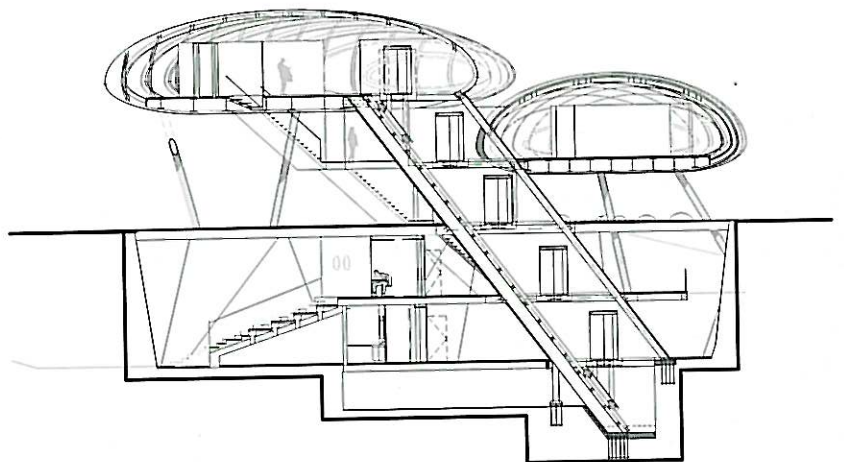
Longitudinal Section



Transverse Section

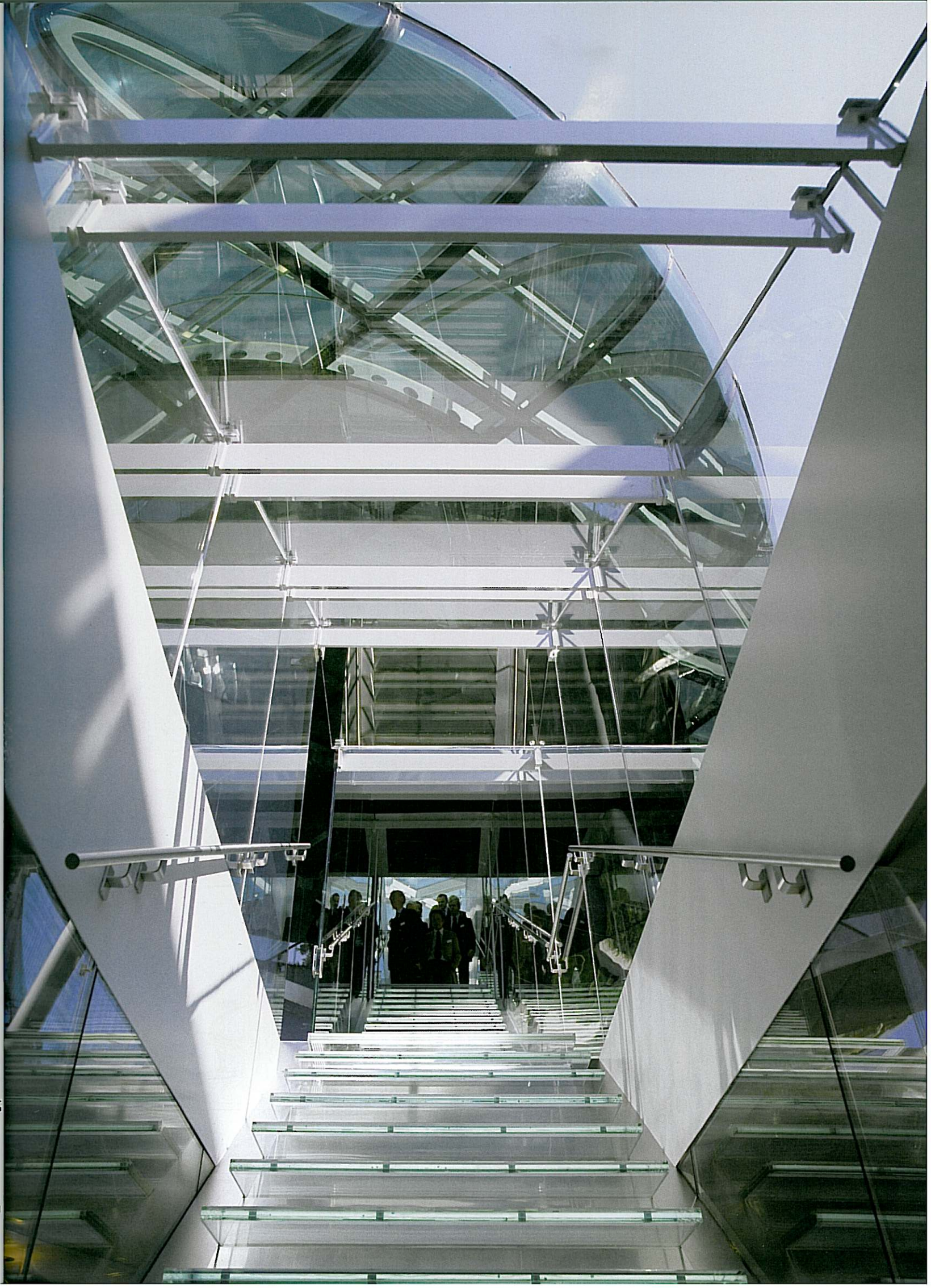


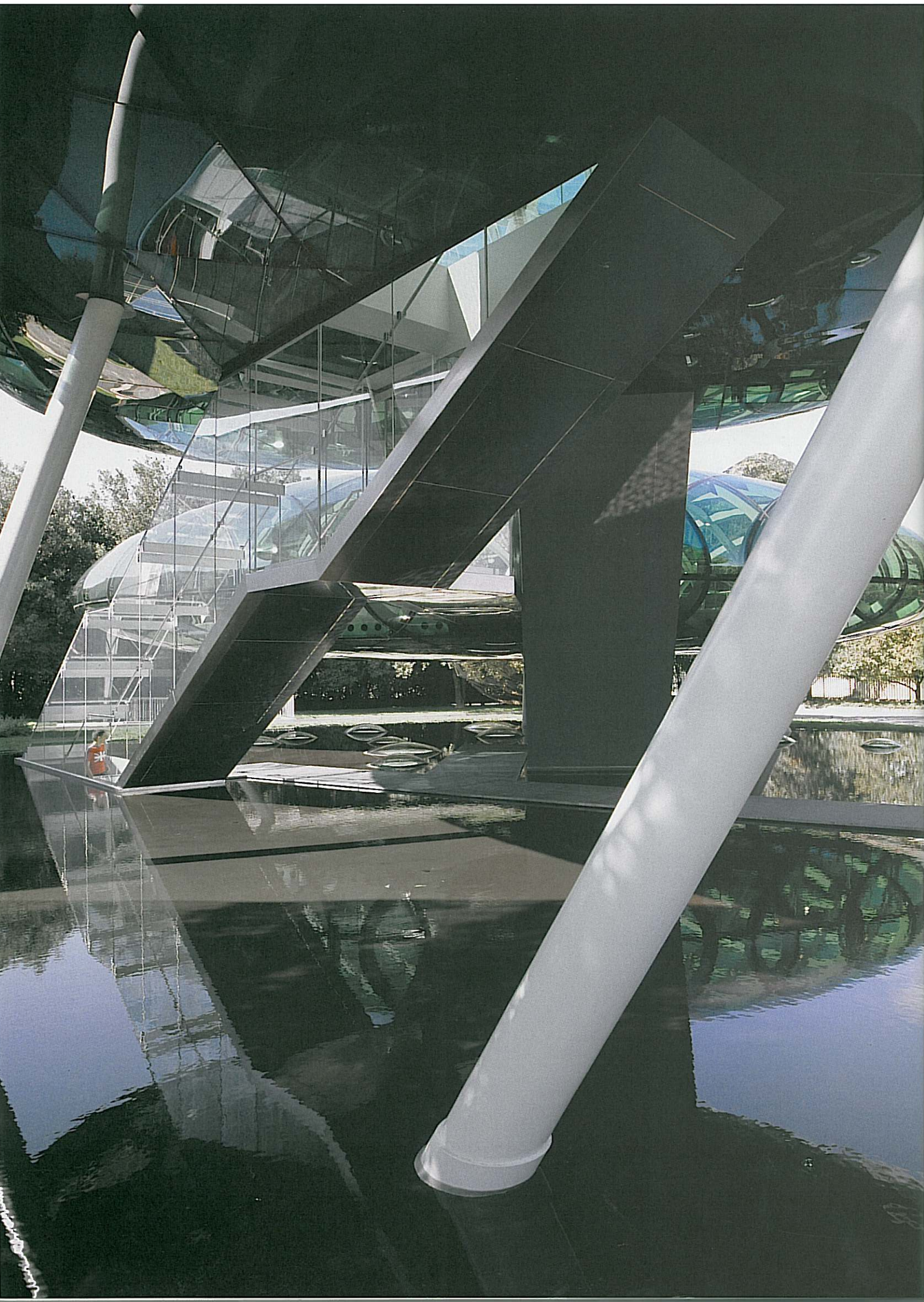
Longitudinal Section

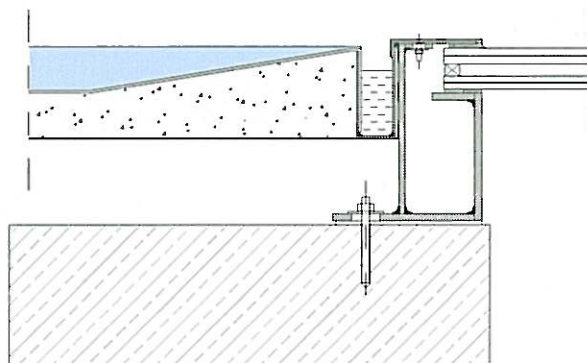
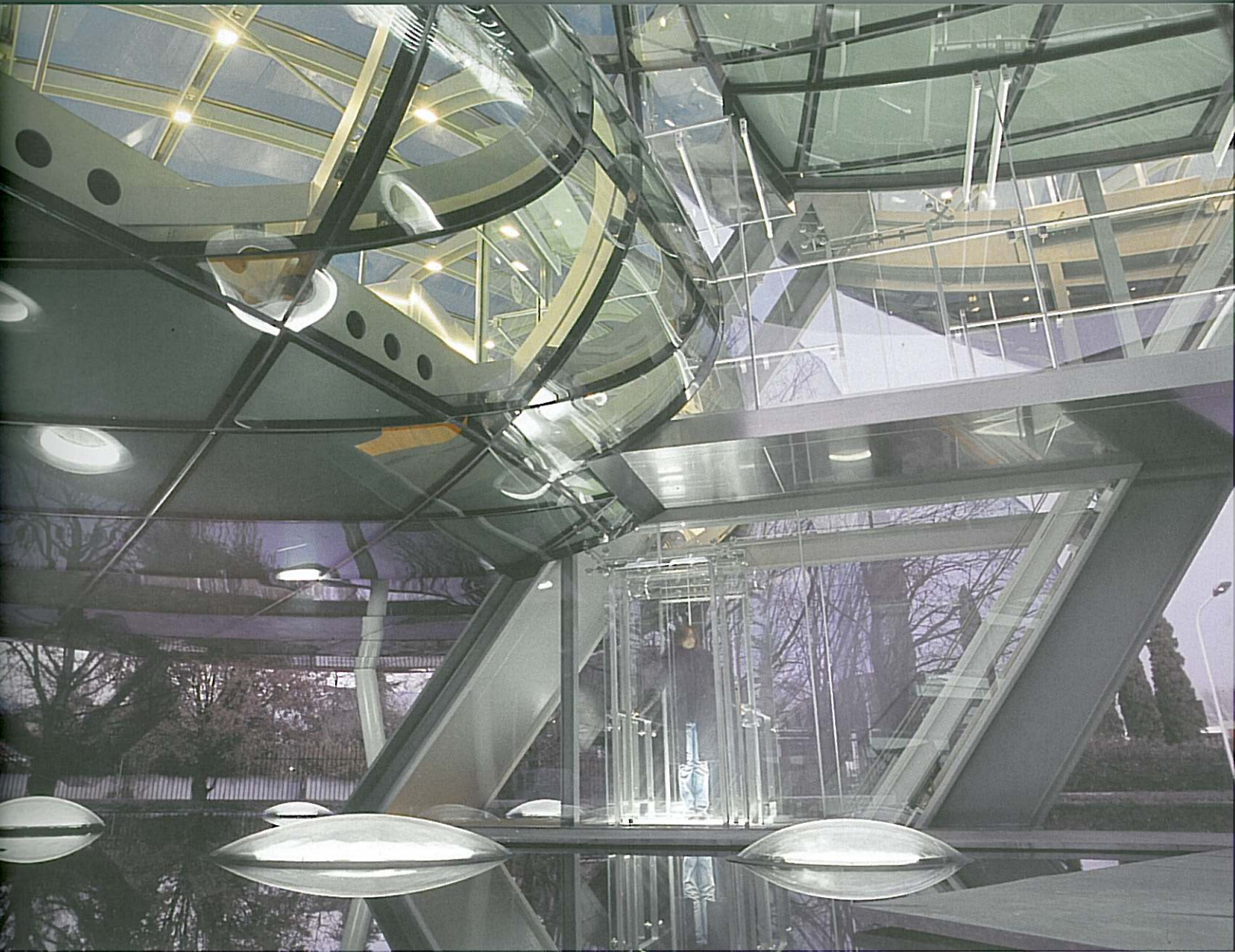


Section

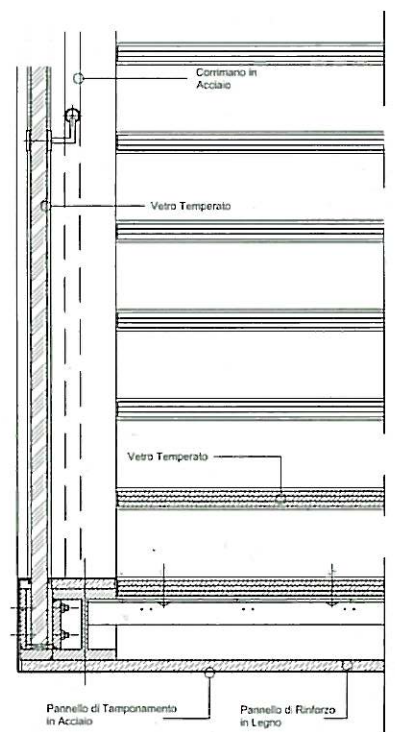




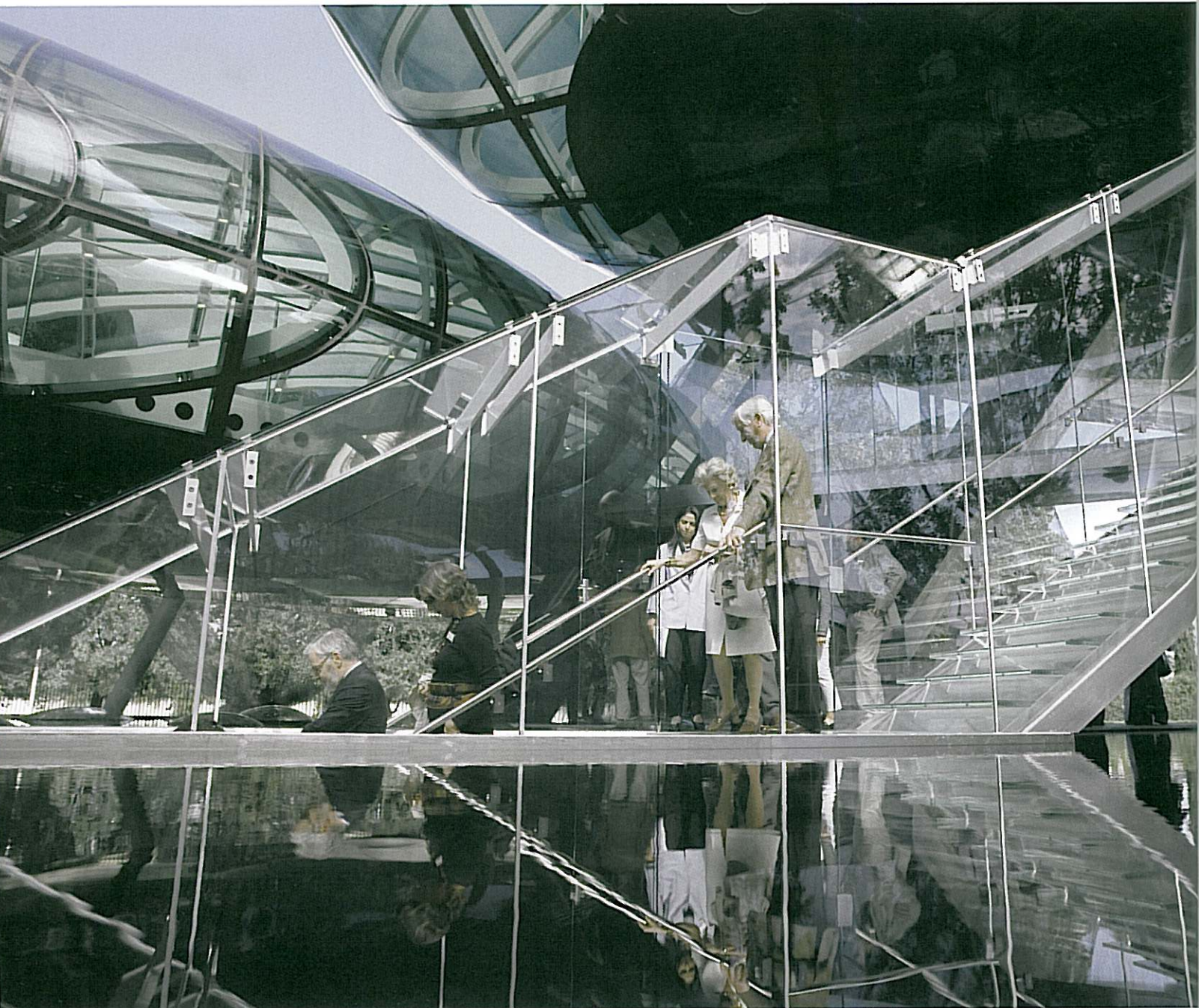
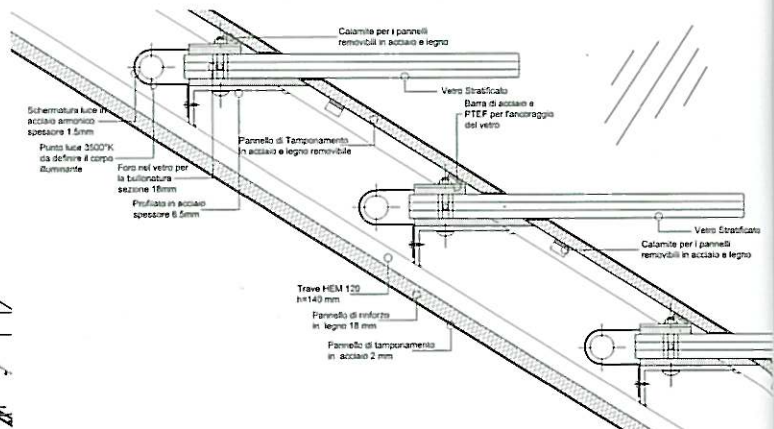
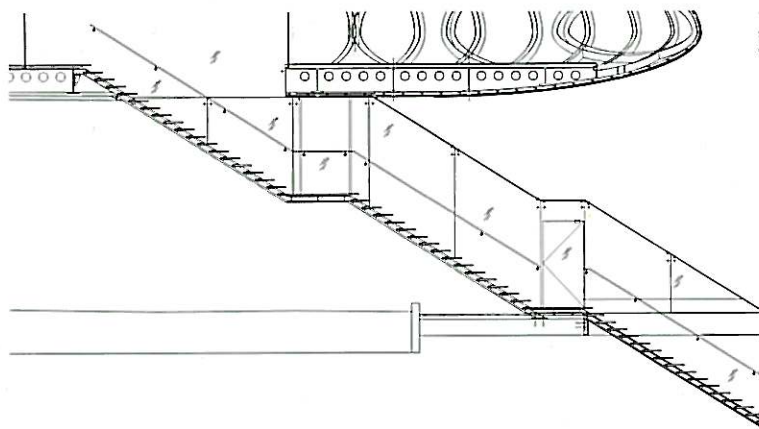


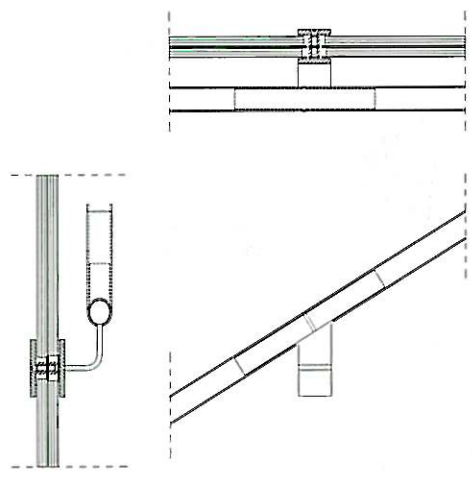
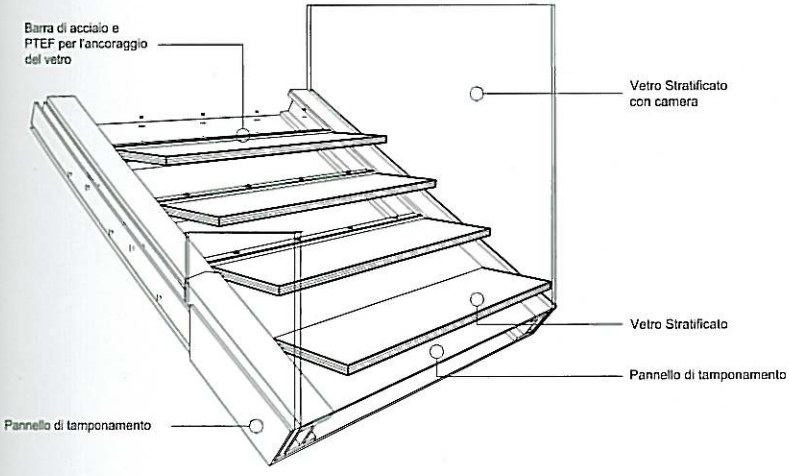


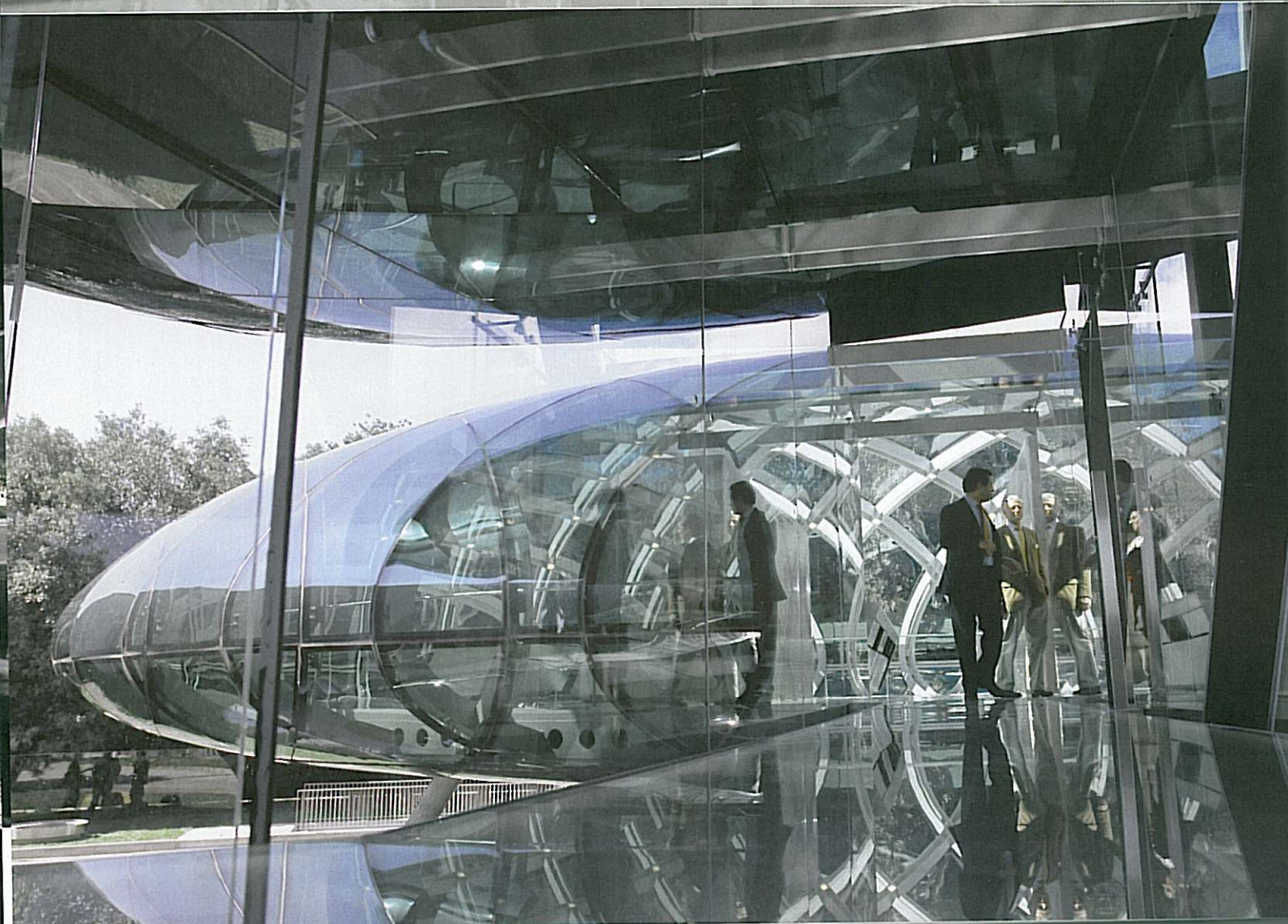
Edge Detail

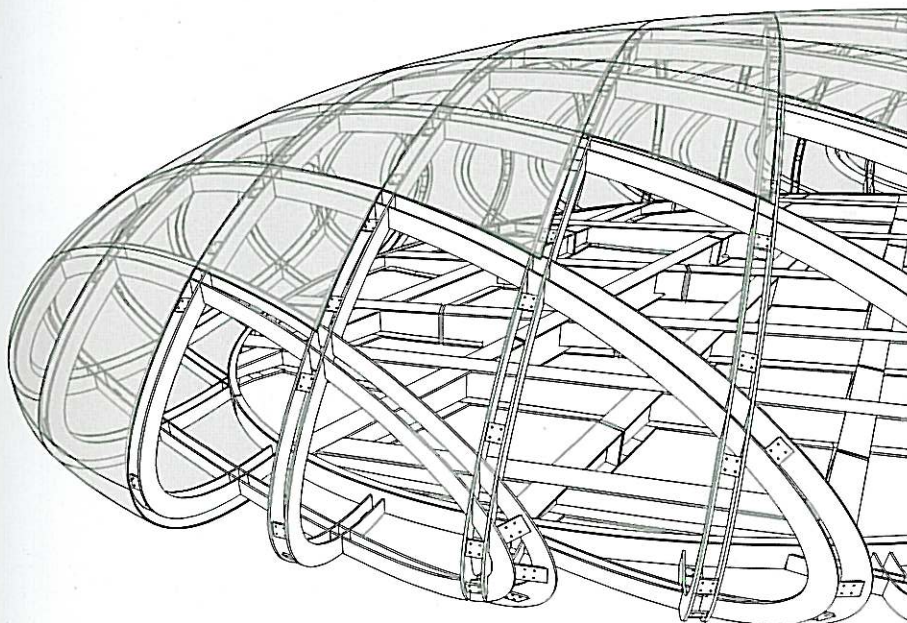
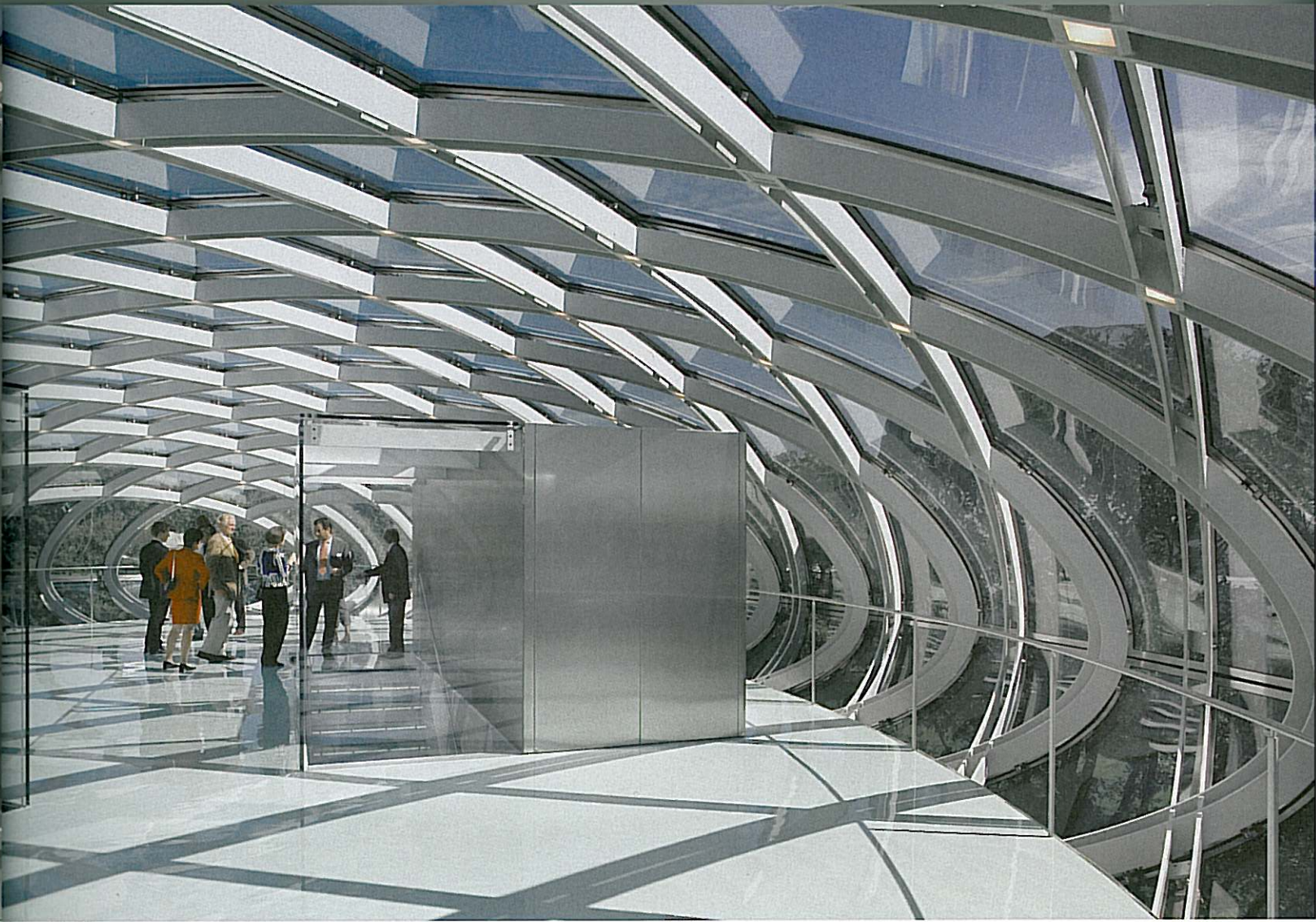


Glasswall Detail

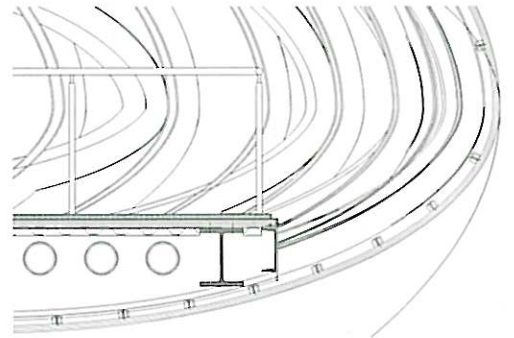




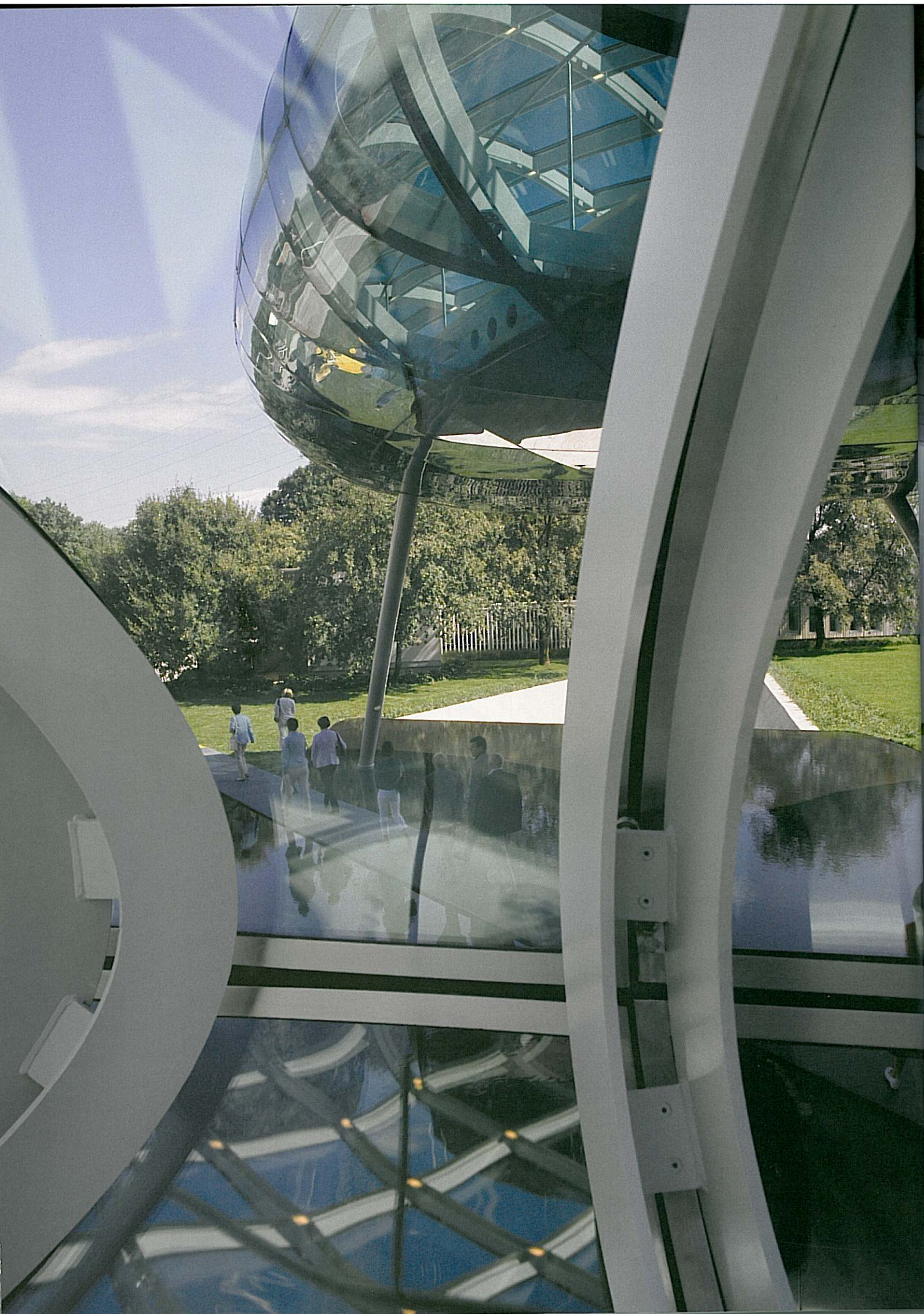




Distillation Buld Detail / 증류구 상세도

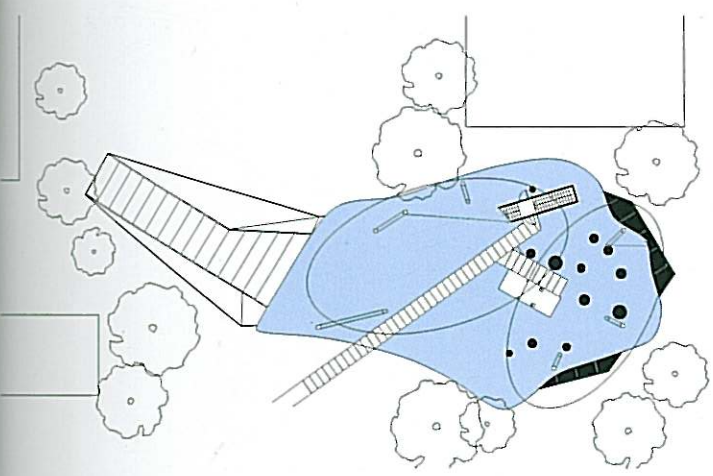


Section Detail / 단면상세도

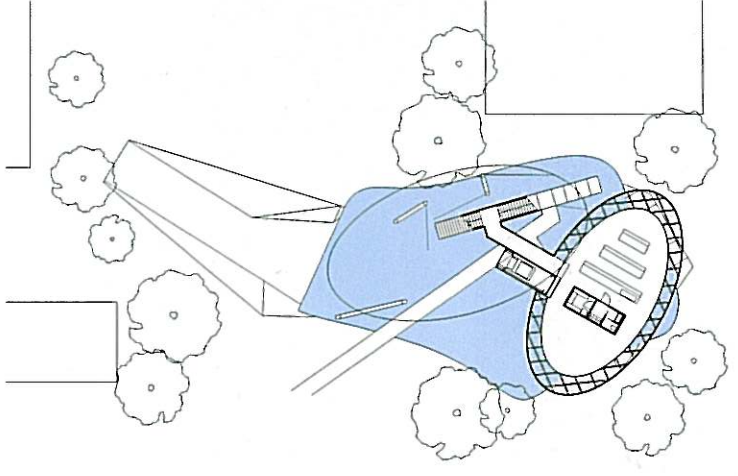




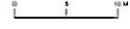




Floor Level +0,00



Floor Level +3,10

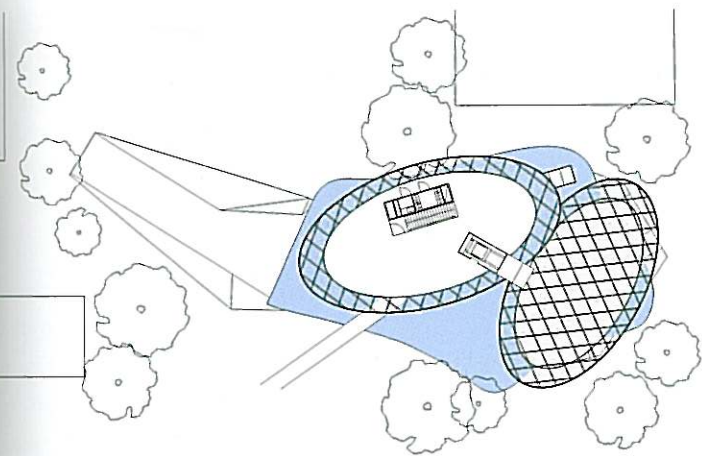




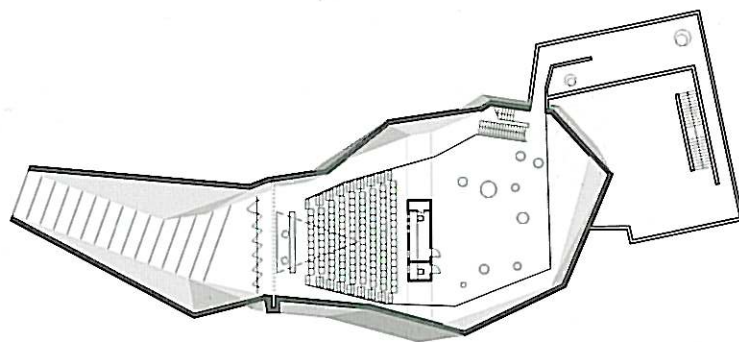
© Matteo Danesin



© Matteo Danesin



Floor Level +6,25



Auditorium Plan

